



Good For Your Building
Good For the Environment
Good For Your Budget

Made from 100% recycled paper, and with at least 10 times less embodied energy than fiberglass, Nu-Wool Premium Cellulose Insulation offers green benefits even before it's in your building. Whether working toward LEED, Green Built or Energy Star or just trying to control energy bills and sound transmission, Nu-Wool delivers premium performance in a guaranteed product.

Nu-Wool's "WALLSEAL System" delivers energy efficient insulation with outstanding STC performance. Reduce costly mechanical and sound control packages while increasing thermal and acoustical performance, and add better protection against mold, mildew and fire. Plus, Nu-Wool is the greenest of all insulation materials.

Premium Insulation. Premium Protection. Great Value.

Superior Product and Performance

Nu-Wool, the best choice

:: Energy Savings

The increased efficiency of the Nu-Wool WALLSEAL system saves as much as 40%* on heating and cooling costs compared to fiberglass insulation

:: Sound Control

Nu-Wool Premium Cellulose Insulation deadens the transfer of sound from one room to another. Nu-Wool Premium Cellulose Insulation has been tested at Riverbank Acoustical Laboratories for Sound Transmission Classifications (STC). In full-scale wall testing, Nu-Wool WALLSEAL greatly reduces the movement of airborne sound from one room to an adjacent room. Hotels, apartments, hospitals, nursing homes, schools, churches, and multi-unit complexes use Nu-Wool in their walls, floors and attics for sound control. STC ratings for a variety of wood and steel stud assemblies may be found at: www.nuwool.com/architects/soundcontrol.aspx.

Green Benefits:

- :: Saves greenhouse gas generation in manufacturing and performance
- :: Manufactured using at least 10 times less energy – embodied energy – than fiberglass insulation manufacturing
- :: Reduces energy use up to 40%* compared to fiberglass
- :: Made from 100% recycled paper, which saves landfill space and methane gas generation



Commercial Buildings: Wood or Steel Construction



4 Simple Reasons why Nu-Wool is the best choice for you

- 1. Superior Energy Savings :: As much as 40%* - saving you some green**
A cellulose insulated building will obtain better performance under real-world conditions than a fiberglass insulated building of otherwise similar construction, according to university and independent studies.
- 2. Sound Control :: Notice the “quietness” with Nu-Wool WALLSEAL**
Nu-Wool Premium Cellulose Insulation greatly reduces the movement of airborne sound from one room to an adjacent room. The sharp sounds that easily transmit through fiberglass insulated structures are subdued by the increased mass of the Nu-Wool WALLSEAL system.
- 3. Competitively Priced :: One of the best values on the market**
Competitively priced, yet still delivering superior sound control, performance and energy savings.
- 4. Environmentally Sound :: Eco-friendly even in the manufacturing process**
Using Nu-Wool Premium Cellulose Insulation is more than a smart choice for its comfort and savings benefits. Nu-Wool is environmentally friendly even in the manufacturing process. It takes at least 10 times MORE energy to make fiberglass insulation than to produce cellulose insulation.

* Savings can vary. Find out why in your Seller's Sheet on R-Values.



From high-rise structures, to multi-tenant complexes, to office spaces to metal buildings, Nu-Wool is the right choice.

Nu-Wool WALLSEAL: How it works

The Nu-Wool WALLSEAL system is a spray-in-place cellulose insulation product that is applied to the wall cavities of new construction, eliminating the voids and air pockets common with other insulation materials. Installed to a density of 3.0 to 3.5 lbs./ft.³, Nu-Wool WALLSEAL will not settle in the wall cavity and forms a seamless bond inside the wall cavity.

Density, or weight per cubic foot, which is important in reducing air infiltration and increasing “Effective R-value”, is more consistent with the Nu-Wool WALLSEAL system. R-Value is a measure of how well an insulation product resists the flow of heat or cold through it.

Because you can actually see the insulation in place, you will know that all of the areas in a wall are insulated.

Nu-Wool Premium Cellulose Insulation is one of the few insulation products that contains a fungicide registered by the Environmental Protection Agency (EPA). Registration is achieved only after rigorous testing to ensure that the borate-based fungicide in Nu-Wool Premium Cellulose Insulation will resist the growth of mold even when exposed to conditions favorable to mold growth

Specifying Nu-Wool on your plans ensures performance and energy savings throughout the life of your structure.

Nu-Wool, leading the LEEDership movement

Designing today, with future generations in mind, our WALLSEAL product offers you the leading GREEN product available in today's market. The best choice for sound, fire and thermal protection, Nu-Wool helps LEED projects benefit with both additional qualifying points and unmatched economic savings year after year.

Product Execution of LEED Goals

Energy & Atmosphere

Prereq 2 Minimum Energy Performance - Required

NU-WOOL insulation reduces the air infiltration of buildings allowing equipment to be downsized. A reduction in air infiltration directly relates to reduced dependence on fossil fuels which reduces air pollution. Buildings using Nu-Wool Premium Cellulose Insulation easily meet and exceed the ASHRAE/IESNA 90.1-2004 standards.

Credit 1 Optimize Energy Performance - 1-10 Points

NU-WOOL has used computer simulations since 1987 to demonstrate reduced energy costs. NU-WOOL can demonstrate by summary printout from energy simulation software that design energy cost is less than the budget defined in ASHRAE/IESNA 90.1-2004.

Materials & Resources

Credit 4.1 Recycled Content - Specify 10% (post-consumer + ½ pre-consumer)- 1 Point

NU-WOOL wall insulation is 85% post consumer.

Credit 4.2 Recycled Content - Specify 20% (post-consumer + ½ pre-consumer) - 1 Point

Credit 5.1 Local Regional Materials - 10% Manufactured Locally - 1 Point*

Credit 5.2 Local Regional Materials - 20% MRC5.1, 50% Harvested Locally - 1 Point*

Nu-Wool attic and wall insulation is manufactured in Jenison, Michigan, ZIP 49428 and Belchertown, Massachusetts, ZIP 01007. Projects within 500 miles of these locations qualify.

* Based on total project cost



Introducing: The U382 Firewall from Nu-Wool

2.5 or 3 hours of Full Load Bearing Fire Protection

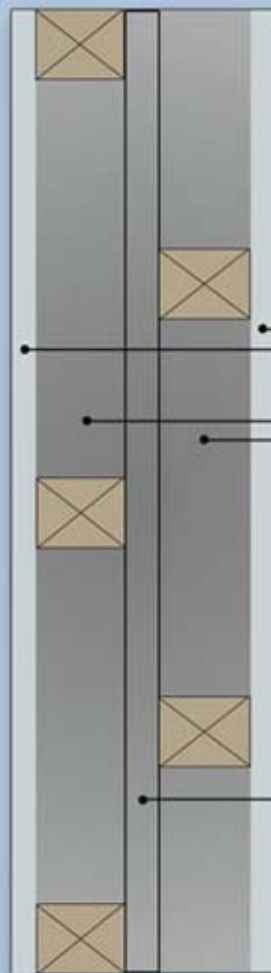
The U382 Firewall is a Nu-Wool proprietary design that is fully load bearing and offers two and a half or three hours of protection that costs less, and saves you more than other solutions on the market.

The U382 meets all the requirements of ASTM-E-119 and UL 263. The U382 meets the requirements of shaft wall assemblies, and the independently loaded double wall assembly maintains its integrity beyond the nominal one-hour per side, giving the U382 a 2 1/2 or 3 hour rating (depending on the number of layers of gypsum wallboard).

Each row of studs has a load of 10,932 pounds applied vertically to achieve the maximum working stress of wood studs in accordance with 2005 National Design Specifications for wood studs.

STC tests were also done on three configurations of the U382 assembly: One using one layer of gypsum board per side achieving an STC of 53. The second test added one layer of gypsum board to one side and this wall assembly achieved an STC of 58. The third test for STC added a layer of gypsum board to each side and achieved an STC of 63.

*Better design,
better protection, for less money.
And it's UL approved.*



U382

2X4 Construction

5/8 Board

Two Plates
Completely
Filled With
WALLSEAL
Insulation

1" Space
Between Plates



Other Firewalls from Nu-Wool

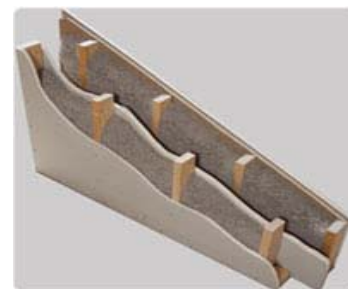
Cost Saving Two-Hour Firewall

Using Only 3 layers 5/8 in.
Type X Gypsum Wallboard
Design No. U360
Underwriters Laboratories
Bearing Wall Rating 2 Hr.
Riverbank Acoustical
Laboratories
STC Rating: 51



Sound Absorbing Two-Hour Firewall

Using 4 layers 5/8 in.
Type X Gypsum Wallboard
Design No. U369
Underwriters Laboratories
Bearing Wall Rating 2 Hr.
Riverbank Acoustical
Laboratories
STC Rating: 58



Contact Nu-Wool:

Midwest/Central US
2472 Port Sheldon Street
Jenison, MI 49428
800.748.0128
info@nuwool.com

Northeast US
50 Depot Street
Belchertown, MA 01007
800.282.7711
general@natlfiber.com